

ON Semiconductor AMI Semiconductor / ON

NOII4SM6600A-QDC

Dio brojeva:

NOII4SM6600A-QDC

Proizvođač / robna marka:

AMI Semiconductor / ON Semiconductor

Opis proizvoda

SENSOR IMAGE MONO CMOS 68-LCC

Liste podataka:

[NOII4SM6600A-QDC.pdf](#)

Status RoHS

Ne sadrži olovo / RoHS sukladnost

Stanje zaliha

430 pcs stock

Brod od

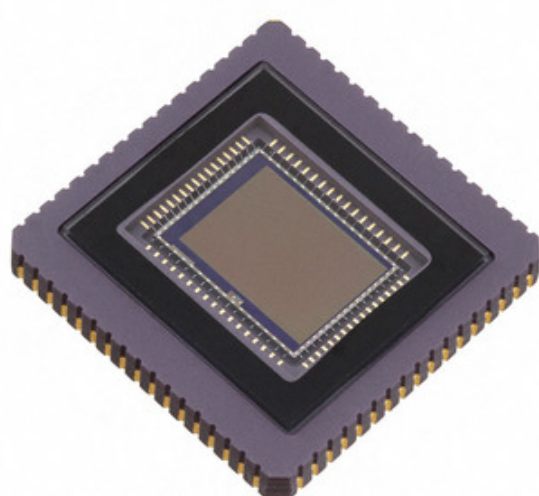
Hong Kong

Put pošiljke

DHL/Fedex/TNT/UPS/EMS

ZAHTEJ ZA PONUDU

Semiconductor



Slika može biti reprezentativna. Pogledajte specifikacije za pojedinosti o proizvodu.

Specifikacije NOII4SM6600A-QDC

| | |
|----------------------------------|--|
| DIO BROJEVA | NOII4SM6600A-QDC |
| PROIZVOĐAČ | AMI Semiconductor / ON Semiconductor |
| OPIS | SENSOR IMAGE MONO CMOS 68-LCC |
| STATUS SLOBODNOG OLOVA / ROHS-A | Ne sadrži olovo / RoHS sukladnost |
| RASPOLOŽIVA KOLIČINA | 430 pcs |
| OBRAZAC PODATAKA | NOII4SM6600A-QDC.pdf |
| NAPAJANJE | 2.5 V, 3.3 V |
| TIP | CMOS |
| PAKET UREĐAJA ZA DOBAVLJAČE | 68-LCC (24.13x24.13) |
| NIZ | - |
| VELIČINA PIKSELA | 3.5µm x 3.5µm |
| AMBALAŽA | Tray |
| PAKET / SLUČAJ | 68-LCC |
| DRUGA IMENA | CYII4SM6600AB-QDC CYII4SM6600AB-QDC-ND NOII4SM6600A-QDC-ND NOII4SM6600A-QDCOS |
| RADNA TEMPERATURA | -30°C ~ 65°C (TJ) |
| RAZINA OSJETLJIVOSTI VLAGE (MSL) | 1 (Unlimited) |
| STATUS SLOBODNOG OLOVA / ROHS-A | Lead free / RoHS Compliant |
| OKVIRI PO SEKUNDI | 5 |
| DETALJAN OPIS | CMOS Image Sensor 2210H x 3002V 3.5µm x 3.5µm 68-LCC (24.13x24.13) |
| ACTIVE PIXEL ARRAY | 2210H x 3002V |

Povezane oznake

| | | |
|--|---|--|
| AMI Semiconductor / ON Semiconductor NOII4SM6600A-QDC | Distributer NOII4SM6600A-QDC | Dobavljač NOII4SM6600A-QDC |
| Cijena NOII4SM6600A-QDC | Slike NOII4SM6600A-QDC | Slika NOII4SM6600A-QDC |
| NOII4SM6600A-QDC PDF Datasheet | NOII4SM6600A-QDC Preuzmite podatkovni list | NOII4SM6600A-QDC Datasheet |
| Stock NOII4SM6600A-QDC | Kupi NOII4SM6600A-QDC | Kupi AMI Semiconductor / ON Semiconductor NOII4SM6600A-QDC |
| AMI Semiconductor / ON Semiconductor NOII4SM6600A-QDC | Dobavljač AMI Semiconductor / ON Semiconductor | AMI Semiconductor / ON Semiconductor Distributer |
| AMI Semiconductor / ON Semiconductor NOII4SM6600A-QDC | ON Semiconductor NOII4SM6600A-QDC | Aptina / ON Semiconductor NOII4SM6600A-QDC |
| Catalyst Semiconductor / ON Semiconductor NOII4SM6600A-QDC | PulseCore Semiconductor / ON Semiconductor NOII4SM6600A-QDC | Sanyo Semiconductor / ON Semiconductor NOII4SM6600A-QDC |

Povezani proizvodi

| | |
|--|---|
| <p>NOII4SM1300A-QWC Proizvođači: AMI Semiconductor / ON Semiconductor Opis: SENSOR IMAGE MONO CMOS 84-LCC Na lageru: 6172 pcs RFQ</p> | <p>NOIL1SE3000A-GDC Proizvođači: AMI Semiconductor / ON Semiconductor Opis: IC IMAGE SENSOR 3MP 369-PGA Na lageru: 45 pcs RFQ</p> |
| <p>NOIL1SM0300A-WWC Proizvođači: AMI Semiconductor / ON Semiconductor Opis: IC IMAGE SENSOR LUPA300 48LLC Na lageru: 3391 pcs RFQ</p> | <p>NOIL1SE0300A-QDC Proizvođači: AMI Semiconductor / ON Semiconductor Opis: SENSOR IMAGE COLOR CMOS 48-LCC Na lageru: 483 pcs RFQ</p> |
| <p>NOII5SM1300A-QDC Proizvođači: AMI Semiconductor / ON Semiconductor Opis: SENSOR IMAGE MONO CMOS 84-LCC Na lageru: 6168 pcs RFQ</p> | <p>NOIL1SC4000A-GDC Proizvođači: AMI Semiconductor / ON Semiconductor Opis: IC IMAGE SENSOR 4MP 127-PGA Na lageru: 3437 pcs RFQ</p> |
| <p>NOII5SC1300A-QDC Proizvođači: AMI Semiconductor / ON Semiconductor Opis: SENSOR IMAGE COLOR CMOS 84-LCC Na lageru: 6901 pcs RFQ</p> | <p>NOIH2SM1000S-HHC Proizvođači: AMI Semiconductor / ON Semiconductor Opis: IC SPACE IMAGE SENSOR 84-JLCC Na lageru: 6871 pcs RFQ</p> |
| <p>NOIL1SM0300A-QDC Proizvođači: AMI Semiconductor / ON Semiconductor Opis: IC IMAGE SENSOR LUPA300 48LLC Na lageru: 529 pcs RFQ</p> | <p>NOII5FM1300A-QDC Proizvođači: AMI Semiconductor / ON Semiconductor Opis: SENSOR IMAGE 1.3MP CMOS 84-LCC Na lageru: 7040 pcs RFQ</p> |
| <p>NOIL1SM4000A-GDC Proizvođači: AMI Semiconductor / ON Semiconductor Opis: IC IMAGE SENSOR LUPA4000 127PGA Na lageru: 4668 pcs RFQ</p> | <p>NOII4SM1300A-QDC Proizvođači: AMI Semiconductor / ON Semiconductor Opis: SENSOR IMAGE MONO CMOS 84-LCC Na lageru: 3193 pcs RFQ</p> |